

AW24

AUTUMN WINTER

Bold, Joyful, Unapologetic.
From A to H cup.

chantelle pulp



**Bold, Joyful, Unapologetic.
From A to H cup.**

chantelle pulp

NEW COLLECTION

AW24

Beauty is an attitude.

chantelle pulp



AW24

PLAY

chantelle pulp



AW24

PLAY

chantelle pulp



AW24

SPICE

chantelle pulp



AW24

TATTOO LOVE

chantelle pulp



AW24

PLAY

chantelle pulp



AW24

TATTOO LOVE

chantelle pulp



AW24

SPICE



AW24

TATTOO LOVE

AW24

PHILTER



chantelle pulp

AW24

SPICE



chantelle pulp

AW24

PHILTER



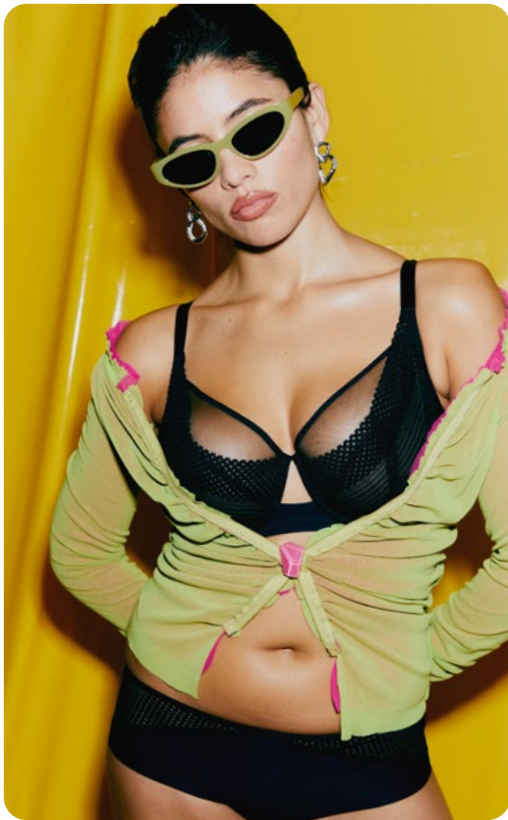
chantelle pulp

AW24

PLAY

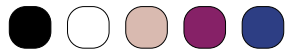


chantelle pulp

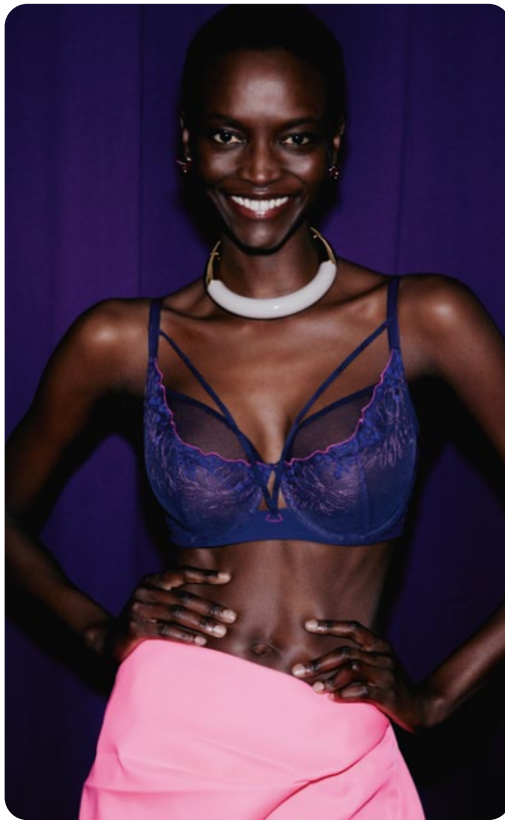


‘Play’

PLAY IT COOL



Effortlessly cool with its superposition of tulle & lace, PLAY provides sexy support in a large range of sizes with no compromise on style. This season, PLAY offers a palette of shades ranging from the most neutral, such as black or golden beige, to the most electric, like Tyrian Pink and Klein Blue.



‘Spice’

SPICE IT UP



Fierce and magnetic, SPICE brings together neon colors with animal and floral embroidery. The bondage-inspired details complete the look for a sexy and sassy vibe.



‘Tattoo love’

LIKE INK ON SKIN



Inspired by the art of vegetal-inspired tattooing, TATTOO LOVE is undoubtedly Chantelle PULP's neo-romantic line. Its delicate embroidery appears like a drawing on the skin, and is available in Black, Watermelon and Sunset.



‘Philter’

DARKLY DIVINE



Shimmery and poisonous, PHILTER's embroidered vine makes for a divinely baroque look, in a wide variety of shapes and sizes for the modern witches. As bewitching as it is exuberant, with its deep shades of black, red and purple, PHILTER is the sharp, eye-catching line of the season.

Dare to shine.



chantelle pulp

NEW COLLECTION

AW24